

<b>Sub-Program/ Component</b>	2. Institution Building and Human Resource Development for Enhancing the Private Sector
-----------------------------------	---

1	<b>University</b>	Hiroshima University (National)
	<b>Graduate School</b>	Graduate School for International Development and Cooperation
	<b>URL of University</b>	<a href="http://www.hiroshima-u.ac.jp/index.html">http://www.hiroshima-u.ac.jp/index.html</a>
	<b>URL of Graduate School</b>	<a href="http://www.hiroshima-u.ac.jp/en/idec/">http://www.hiroshima-u.ac.jp/en/idec/</a>
	<b>Program name</b>	Special Program for Sustainable Development of Developing Countries Development Policy Course in Division of Development Science
	<b>Degrees</b>	a. Master of Arts
		b. Master of Science
		c. Master of International Cooperation Studies
<b>Credit and years needed for graduation</b>	a. 30 Credits, 2 Years	
	b. 30 Credits, 2 Years	
	c. 30 Credits, 2 Years	

## 2. Features of University

Under The National School Establishment Law, Hiroshima University was established on May 31, 1949. After World War II, the school system in Japan was entirely reformed and each of the institutions of higher education under the pre-war system was reorganized. As a general rule, one national university was established in each prefecture, and Hiroshima University became a national university under the new system by combining the various pre-war higher educational institutions in Hiroshima Prefecture.

The new university combined eight component institutions: Hiroshima University of Literature and Science, Hiroshima School of Secondary Education, Hiroshima School of Education, Hiroshima Women's School of Secondary Education, Hiroshima School of Education for Youth, Hiroshima Higher School, Hiroshima Higher Technical School, and Hiroshima Municipal Higher Technical School. Later in 1953, the Hiroshima Prefectural Medical College was also added to the new Hiroshima University.

Some of these educational institutions already had brilliant traditions and histories of their own. Above all, Hiroshima School of Secondary Education, founded in 1902, had a distinguished place as one of the nation's two centers for training middle school teachers. The Hiroshima University of Literature and Science was founded in 1929 as one of the national universities, and in combination with the Hiroshima School of Secondary Education which was formerly affiliated to it, reigned over the Japanese world of education.

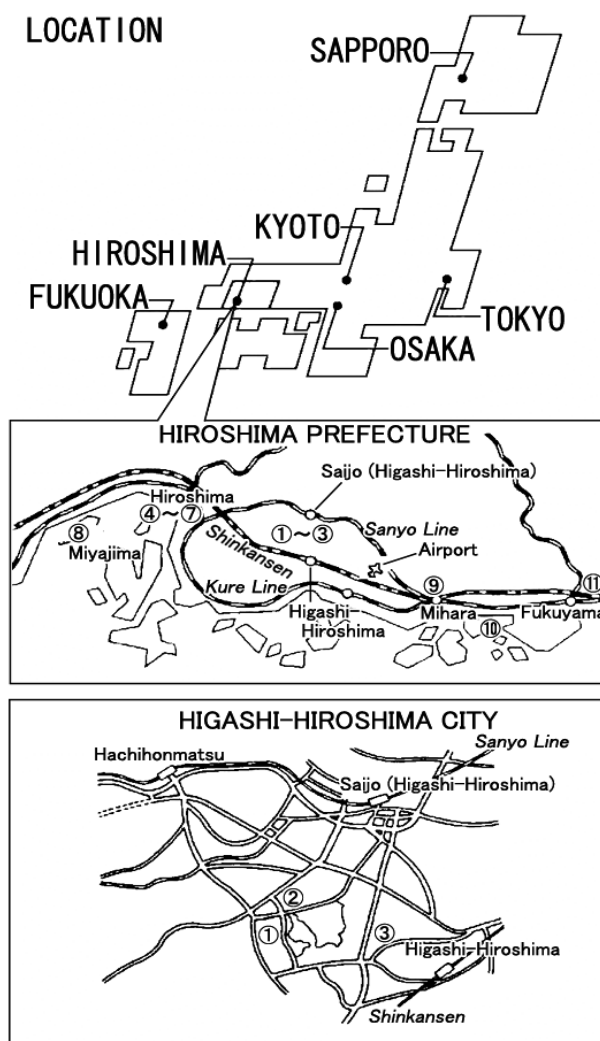
The present Hiroshima University, which was created from these two institutions as well as three other "old-system" training institutions for teachers, continues to hold an important position among the universities and colleges of education in Japan. Also, Hiroshima Higher Technical School, which has introduced a large number of talented people into the world of Japanese industry was

founded in 1920 and was promoted to a Technical College (Senmon Gakko) in 1944. Hiroshima Higher School was founded in 1923 as one of the pre-war higher schools which prepared students for Imperial Universities and other government-supported universities. Although these educational institutions suffered a great deal of damage due to the atomic bomb which was dropped on Hiroshima on August 6, 1945, they were reconstructed and combined to become the new Hiroshima University. In addition, Graduate Schools were established in 1953. The new Hiroshima University has risen from the ruins of war like a phoenix, which is in fact the University's symbol.

At present, Hiroshima University has the following eleven Faculties: the Faculty of Integrated Arts and Sciences, the Faculty of Letters, the Faculty of Education, the Faculty of Law, the Faculty of Economics, the Faculty of Science, the Faculty of Engineering, the Faculty of Applied Biological Science, the Faculty of Medicine, the Faculty of Dentistry and the Faculty of Pharmaceutical Sciences.

There are ten Graduate Schools with master's and/or doctoral degree courses: the Graduate School of Letters, the Graduate School of Education, the Graduate School of Social Sciences, the Graduate School of Science, the Graduate School of Advanced Sciences of Matter, the Graduate School of Medical and Pharmaceutical Sciences, the Graduate School of Dental Science, the Graduate School of Engineering, the Graduate School of Biosphere Science and the Graduate School for International Development and Cooperation (IDEC).

■ GEOGRAPHICAL LOCATION OF HIROSHIMA UNIVERSITY



### **3 . Features of Graduate School**

Graduate School for International Development and Cooperation (IDEC), Hiroshima University was established in 1994. IDEC has pragmatic features as follows.

#### **Integration of Arts and Science**

Integrated education and research in social sciences, engineering, biology, and humanities are designed to educate specialists who can contribute to international development and cooperation.

#### **Mutual Understanding of Different Values**

Common course lectures pertaining to the cultures and histories as well as economic, social and educational concerns of individual Asian countries are offered, and planned intellectual and human exchange are carried out to advance education and research on the basis of mutual understanding.

#### **Practical Education**

IDEC offers the special internship program which are designed to improve the qualifications and skills of students who plan to contribute in the field of developmental cooperation in future. The main features of this program are as follows:

#### **Explorers of International Cooperation Studies to Cross Borders (i-ECBO) Special Educational Program**

- (1) Trial of the fields-crossing educational program (Teaching system by several professors from different fields)
- (2) Overseas internship with the aid of government agencies and private enterprises (The 6 months internship at international cooperation institutes / private enterprises in developing countries)
- (3) Development of the teaching materials and the "PBL"(\*) education system by using communication technique (PBL classes for small groups and debate training)  
(\* ) "PBL": Problem-Based Learning. The educational method which actually sets the specific problem for the students from different fields who are to seek the solution by sharing the work in the group.

#### **Other Field Studies**

- (1) International Curriculum Development: Field-based Practicum

This is an annual course-work to be carried on in a developing country within Asia as one part of the Master's program. The program serves as an opportunity for students to develop and demonstrate their original lesson plans (in English) for the better understanding of Japanese culture and society by foreigners, as well as to obtain a first-hand understanding of the educational conditions within developing countries.

- (2) Field Studies in Cultural Dynamics

This practical class aims to provide students the necessary knowledge to conduct field surveys and to analyze the data thus collected in the fields of intercultural communication, rural economics, and regional and cultural studies, and eventually, help them to grasp the dynamism of culture in Asia, including Japan. The recent field study includes "Development and Culture Change in a local society of Chittagong Hill Tracts in Bangladesh"

## 4 . Features of the Program

Developing countries today are facing various difficulties, including rapid population growth, regional conflicts, deteriorating standard of living and environmental problems. An insufficient social infrastructure, particularly poor education and medical conditions and low technological level, impedes socioeconomic development in developing countries.

Therefore, it is of the utmost urgency that we nurture young researchers and planners who are experts in their specialized areas and have willingness to contribute to international cooperation. Through its innovative educational program, Graduate School for International Development and Cooperation (IDEC) aims to provide educational opportunities for students to learn about the interdisciplinary and practical subjects necessary for international development and cooperation, including economics, environmental science, engineering, ecology, agricultural science, pedagogy, sociology, international politics and peace science. The school as a gathering with international characters offers a special place where the students with different expertise from various countries with different cultural, social, educational, political, and economical backgrounds are able to foster closer ties each other and share the common agenda and goals in international development and cooperation. JDS fellows will belong to Development Policy Course in Division of Development Science.

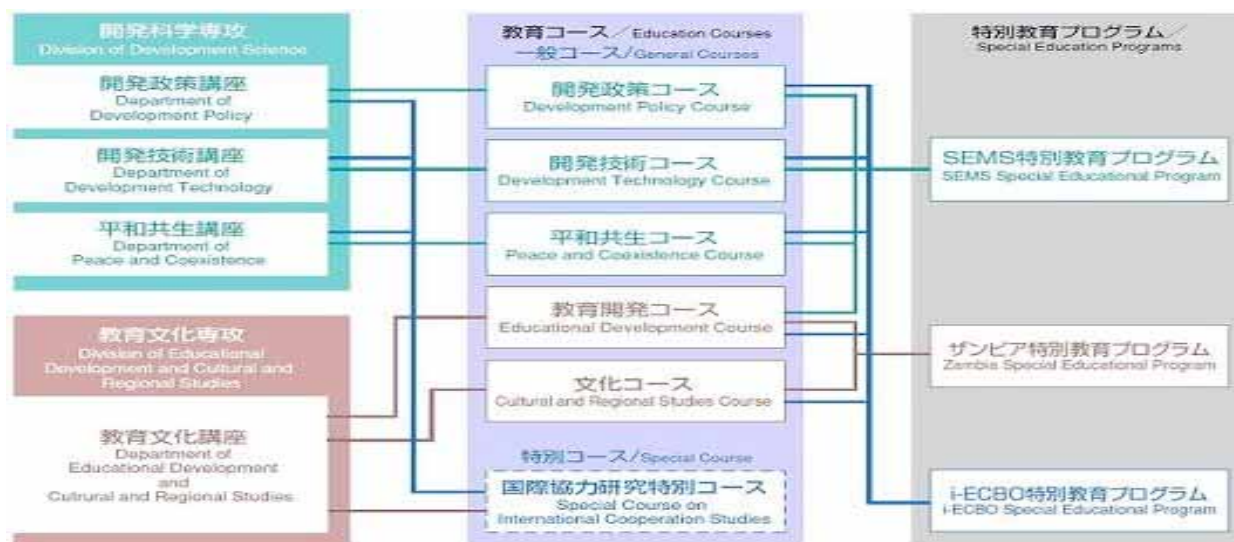
### [1] Division of Development Science

The Division of Development Science nurtures those specialists who contribute to creating sustainable society in developing countries in social, economic and environmental aspects, namely professionals for international institutions and aid-providing organizations, administrators and academic researchers. The division offers courses on various issues on economic development, socio-political and peace studies, environmental management, infrastructure planning and design, and biological resources development. The courses are designed to provide a systematic and efficient teaching and research by utilizing an integrated approach to the social and natural sciences and methodologies.

### (1-1) Department of Development Policy

#### (1-1-1) Development Policy Course

The students of the Development Policy Course study economics and related social science methodologies and policy applications with a focus on sustainable development in developing countries. The course is designed to develop student's ability to analyze socioeconomic problems that accompany the development process, such as poverty, environment and economic stability, and to explore how to prescribe economic policies and aid coordination in order to tackle these problems in practice. The program seeks to train professionals with advanced skills, administrators, and researchers capable of improving the development process through international cooperation.



## 5. Necessary Curriculum to Obtain to the Degrees

(See attached sheet)

## 6. Academic Schedule

### Fall Semester (October 1 - March 31)

October 1 - February 11	Classes
October 3 (tentative)	Entrance Ceremony (autumn)
November 5	University Anniversary Day
December 24 - January 7	Winter Vacation
February 12 - March 31	End-of- Academic-Year Holidays

### Spring Semester (April 1 - September 30)

April 1 - April 8	Spring Vacation
April 2 (tentative)	Entrance Ceremony (spring)
April 9 - July 31	Classes
August 1 - September 30	Summer Vacation

## 7. Facilities

- Hiroshima University International House
- Ikenoue Student Dormitories

## 8. List of faculty members capable of guiding JDS fellows

(See attached sheet)

## 9. Message for Applicants

It is advisable that applicants have background of economics and proficiency in English.

## Necessary Curriculum to Obtain to the Degrees

**【Common Courses I】**

Course Title	Credit
International Relations	2
Environmental Management Technology	2
International Cooperation	2
Educational Development	2
Asian Cultures	2
Theories of Global Development	2

**【Common Courses II】**

Course Title	Credit
Developing Debating Skills	2
Fieldwork	2
Internship	2
Graduate Writing I	2
Graduate Writing II	2
Academic Writing	2

## Division of Development Science

Course Title	Credit
Development Sciences I	2
Development Sciences II	2

**【Development Policy】 For Lao JDS**

Course Title	Credit
Theories of Social Development: Modernization of non-western countries	2
Japanese Economy	2
Economic Development I	2
Economic Development II	4
Comparative Study of Economic Development	2
Environmental and Resource Economics	4
International Economics	2
International Economic Policy	2
Theory of Policy Evaluation	2
International Finance	2
Development Finance	4
International Macroeconomics	2
Economic Statistical Analysis	2
Corporate Strategy	4
International Human Resource Development	2
Industrial Development	2
Multinational Corporations	2
Environmental Management	2
International Public Policy	2
Global Environmental Policies	2
Development Policy I	2
Development Policy II	2
Econometrics	2
Research Method	2
Development Microeconomics	2
Special Seminar for Linkage Program	8
Seminar on Economic Development	8

**【Development Technology】**

Course Title	Credit
Development Technology	4
Transportation Engineering	2
Regional and Urban Engineering	2
Tourism Policy	2
Transportation Planning	2
Systems Analysis for Regional Development	2
Environment Simulator	2
Marine Hydrodynamics	2
Ground Disaster Prevention Engineering I	2
Ground Disaster Prevention Engineering II	2
Applied Marine Hydrodynamics	2
Marine Environmental Conservation	2
Environmental Fluid Dynamics	2
Earthquake Resistant Structures	2
Disaster Prevention of Earthquakes	2
Strength of Structures	2
Architectural Planning and Theory	2
Ocean Environments	2
Environmental Planning	2
Environmental Monitoring	2
Grassland Ecosystems	2
Animal Resources	2
Management and Conservation of Ecosystems	2
Botany: Resources for the Future	2
Ecosystem Microbiology	2
Applied Ecosystem Science	2
Environmental Sabo- Engineering	2
Biomass Utilization	2
Sustainable Architecture and Urban Development I	2
Sustainable Architecture and Urban Development II	2
Seminar on Regional and Urban Engineering	8
Seminar on Development Technology	8
Seminar on Environmental Conservation	8
Seminar on Environmental Monitoring	8
Seminar on Animal Reproduction	8
Seminar on Resource Ecology	8

**【Peace and Coexistence】**

Course Title	Credit
Practicing Peacebuilding	2
International Legal and Political System	2
International Conflict	2
Conflict Resolution	4
Asian Law	2
International Political Economy	4
International Security and Diplomacy	2
Cooperative Diplomacy	4
Human Security	4
Politics in Japan	2
International Politics	4
International Law and International Institutional Law	2
Regional Cooperation in the Global Society	4
Peace Studies	4
Peace Building	4
Seminar on Peace and Co-existence	8

## Division of Educational Development and Cultural and Regional Studies

Course Title	Credit
Educational Development and Cultural Regional Studies I	2
Educational Development and Cultural Regional Studies II	2

## 【Educational Development】

Course Title	Credit
Morphology of Contemporary Standard Japanese	2
Education in Asian and African Countries	2
Education in Japan	2
Theory and Practice of Educational Research I	2
Theory and Practice of Educational Research II	2
Planning for Educational Development I	2
Planning for Educational Development II	2
Education and Development in Africa	2
Cooperation for International Education	2
Human Resource Development in Education	4
Theories of Education for International Understanding	4
Gender and Educational Development	2
Science Education Development	4
Foundation of Curriculum Development for Science Education	4
Mathematics Education Development	4
Basic Education for Development in Mathematics	2
Information and Communication Technologies in Education	2
International Curriculum Development: Field Based Practicum I	2
International Curriculum Development: Field Based Practicum II	2
Concepts and Issues in Motor Control	2
Education for Ethno-Languages	2
Culture for Ethno-Languages	2
Developmental Education	2
Development of Literacy Education	2
Non-formal Education	2
Education for Understanding of the Natural Environment	4
Education for Protecting the Natural Environment	2
Development of Basic Ability for Science and Technology I	2
Development of Basic Ability for Science and Technology II	2
Introduction to the teaching of Artistic Expressions	2
Development of Higher Education	2
International Exchange in Education	2
Cultural Adaptation	2
Language Education and Media	2
Introduction of Statistical Analysis in Education I	2
Introduction of Statistical Analysis in Education II	2
Contrastive Study of Languages and Cultures	2
Structures and Types of Expressions among Languages	2
Fundamental Theory of Practice in International Cooperation in Education	2
Case Studies of International Cooperation in Africa and Central-South America	2
Seminar on Educational Development	8
Seminar on Curriculum Development	8
Seminar on Basic Developmental Education	8
Seminar on Language Education	8
Seminar on Higher Education and International Exchange	8
Seminar on International Development Cooperation in Education	8

**【Cultural and Regional Studies】**

Course Title	Credit
Comparative Asian Cultures	2
Intercultural Communication	4
Development and Culture	2
Japanese Culture	2
Rural Economics	4
Asian Societies and Cultures	2
Area Studies	2
Field Studies in Cultural Dynamics	2
Cultural Anthropology of South Asia I	2
Cultural Anthropology of South Asia II	2
Cultural Anthropology	2
Contemporary Chinese Cultures	2
Rural Studies of Developing Countries	2
Rural Development of South Asia	2
East Asian Culture	2
Study on Colonialism and Culture	2
Seminar on Cultural Dynamics	2
	8

Course Title	Credit
International Environmental Cooperation Studies I	2
International Environmental Cooperation Studies II	2
Practical Seminar on International Cooperation Project	2

**Acquiring Credits****Master's Program**

1) Common subjects I・II(required electives)	6 credits (4 credits required from Common subjects I)
2) Subjects specified by the supervisor (required)	12 credits or more
3) Seminar (required)	4 credits or more
4) Free electives outside of the subjects specified by the supervisor and may be subject taken at another graduate school (elective)	
Total: 30 credits or more	

**Notes:**

- Under the guidance of the supervisor the student must take three subjects to be done as required electives. Students who take more than 6 credits as common subjects I・II must consult with their supervisor and include these subjects in categories '2' (subjects specified by the supervisor) or '4' (free electives outside of the subjects specified by the supervisor and may be subjects taken at another graduate school).  
As a rule students are to consult with their supervisor on the 12 credits or more they are to take from the list of established specified courses.
- Students are required to take one seminar as specified by the supervisor. Students are allowed to take a maximum of 8 credits for seminars. Those taking more than 4 credits for seminars must consult with their supervisor and include those credits in categories '2' (subjects specified by the supervisor) or '4' (free electives outside of the subjects specified by the supervisor and may be subjects taken at another graduate school).

## University Library

Hiroshima University presently has approximately 3,240,000 volumes and 50,000 periodicals of which approximately 1,680,000 volumes and 33,000 periodicals are stored in the libraries. The Higashi-Hiroshima Campus has three libraries: Central Library, East Library, and West Library. The Medical Science Library and Higashi-Senda Library are found on the Hiroshima campus.

URL : [http://www.lib.hiroshima-u.ac.jp/index\\_e.html](http://www.lib.hiroshima-u.ac.jp/index_e.html)

### (1) Use of Library Materials

Members of the University can use their Student or Staff ID as a Library Card.

### (2) Opening Hours

		Higashi-Hiroshima Campus			Hiroshima Campus	
		Central	East	West	Medical Science Branch	Higashi-Senda Branch
Semesters	Mon-Fri	8:30-22:00	8:30-21:00	8:30-21:00	8:30-22:00	8:30-22:00
	Sat	10:00-18:00	10:00-17:00	10:00-17:00	9:45-19:15	12:00-22:00
	Sun	10:00-18:00	closed	closed	9:45-19:15	closed
Vacations	Mon-Fri	8:30-17:00	8:30-17:00	8:30-17:00	8:30-22:00	8:30-21:00
	Sat & Sun	closed	closed	closed	9:45-19:15 (closed in August)	13:00-19:00 (open only Saturdays in August and September)

Notes

1. During vacation periods, the library is closed on Sundays.
2. When a Sunday and a holiday fall on the same day, the library will be open on Sunday, and the following day it will be closed.
3. When a Saturday and a holiday fall on the same day, the library will be closed.

### (3) Closed Days

The library is closed on National holidays, University Foundation Day (November 5<sup>th</sup>), monthly cleaning days and from December 27<sup>th</sup> to January 4<sup>th</sup>.

### (4) Procedure for using materials

#### 1. Open shelves and stacks materials

##### ( i ) Borrowing

*Books in open Shelves:* Bring the books to the service counter with your Library Card (for graduates and undergraduates this is your student ID card). You can also borrow books by yourself by utilizing the automated borrowing machines.

*Books in Stacks:* In order to borrow books that do not have a barcode pasted, you need to fill out a *toshō riyō hyō* form (図書利用票) and submit it to the service counter along with the books.

##### ( ii ) Long-term Borrowing

This service is available during summer, winter, and spring vacations. There will be a detailed notice in advance.

##### ( iii ) Reservations

You can reserve materials which another user has checked out. Please make a request at the counter with your Library Card or Student ID. You can also make reservations using OPAC on the university library's homepage. Reservations cannot be made if you have overdue books.

(iv) Renewals

You can renew one time. This policy does not apply to reserved, overdue, and long-term borrowing books.  
If you wish to extend the loan period, please bring books and your ID to the library counter.

(v) Returns

Please return books by due date to the library counter. After the library is closed, put them into the Book Drop.  
※Additional books-borrowing and reservation are not permitted if any of the books you have borrowed are overdue.  
Your borrowing and reservations are not permitted in proportion to the number of overdue days.  
※If you have lost or soiled materials, you must indemnify for them.

**2. Periodicals and Newspapers**

(i) Taking periodicals out of the library

Please refer to the table below in the “(5) Borrowing Policy” section. (When returning the periodicals, please bring them to the service counter 15 minutes before the closing time of the library (or before the closing time of the book vault from which you took the item). After getting the periodicals checked at the service counter, please return them to the place that you found them.)

Newspapers and latest editions of journals can not be taken out of the library. Please make copies if the need arises. (This does not apply to the Medical Science Library)

(ii) Reference Books

Reference books are not for borrowing. Please use them inside the library.

(iii) Audio-Visual Materials

These include DVDs, CDs, videotapes, LDs, language learning tapes, etc. Please request them at the counter and use them in the A.V. Rooms.

**(5) Circulation Policy**

<Central, East, West and Higashi-Senda Library>

Borrowing categories	Books		Back Issues of the Periodicals	
	Volumes	Lending Period	Volumes	Lending Period
Graduates and Professor emeritus	15	30 days	10	1day
Undergraduates and other with permission	8	2 weeks	5	1day

Not-for-circulation materials: Reference books, newspaper, the latest issues of journals, a part of AV materials, rare books etc.

**(6) How to find materials**

(i) Books and Journals

When you want to find books or journals in the collection of Hiroshima University, try OPAC (Online Public Access Catalogue) available on the Internet. There are computer terminals for OPAC users in the libraries. If you can't find one, please ask librarians.

(ii) Databases

A number of databases are available for users who wish to search articles.  
A list of databases is on the library homepage: <http://www.lib.hiroshima-u.ac.jp/>

(iii) Electronic Journals

Hiroshima University holds a huge collection of electronic journals. However, their titles are not included in OPAC.  
A list of electronic journal titles is: [http://www.lib.hiroshima-u.ac.jp/reference/ejriyoan\\_e.html](http://www.lib.hiroshima-u.ac.jp/reference/ejriyoan_e.html)

## **(7) Reference Services**

Reference service gives advice and assistance to you on the following matters:

- How to find materials or how to use each material.
- What materials are available for a given theme.
- Where materials are located.
- How to use the databases or OPAC search devices.

## **(8) Other Services**

### 1. Copying

You can copy materials under Copyright Law. Fill out the form "*Bunken Moshikomi hyo* 文献申込票" and submit it to the counter. A fee of 20 yen per sheet will be charged. Photocopy machines that accept *Seikyo* copy cards are available. (There are color photocopy machines in the Central, East, and Medical Science Libraries)

### 2. Interlibrary Lending Service

( i ) *Interlibrary Lending (ILL) service*: Most materials unavailable in the University can be borrowed or copied for users from other libraries. All related fees and postage is charged to the user.

( ii ) *Referral Service (introduction to other libraries and information centers)*: In cases where users go directly to other libraries, a letter of introduction will be issued. For faculty members and graduates, "*Kokuritsu daigaku toshokan kyotsu etsuransho* 国立大学図書館共通閲覧証" will permit the use of another national university library without a letter of introduction.

## **(9) Use of Facilities**

The facilities below are available. Please apply at the counter with your Library Card. (Reservations need to be made for use of (ii), (iii), and (v) below.

### ( i ) Study Carrels (Central, East and West Library)

For graduates or above

### ( ii ) Seminar and Group Study Rooms (Central and West Library)

For study sessions or lectures under a professor's supervision

### ( iii ) Rare Books Reading Room (Central Library) / Special Collections Reading Room (West Library)

Special materials and rare materials are available here. Reservation is necessary.

### ( iv ) Audio-Visual Room

This room is available for the use of library A.V. materials only.

### ( v ) Library Hall (Central Library)

This can be used for lectures, research meetings and seminars for up to 100 people. Please submit the *toshokan shisetsu riyo yoyakusho* (図書館施設利用予約票) in advance.

## 広島大学国際交流会館の概要

### GENERAL INFORMATION OF HIROSHIMA UNIVERSITY INTERNATIONAL HOUSE

#### 1. 名称及び所在地 /House Name and Address

名称/Name 広島大学国際交流会館

Hiroshima University International House

所在地/Address 〒739-0046 東広島市鏡山二丁目457番地

2-457 Kagamiyama, Higashi-Hiroshima City, 739-0046

#### 2. 施設及び設備/ Facilities and Furnishings

国際交流会館は、鉄骨鉄筋コンクリート10階建（A棟）と鉄筋コンクリート5階建（B棟）の2棟からなり、それぞれ次の様な施設・設備を備えています。

The International House consists of a ten-story ferroconcrete building of steel frame construction (A building), and a five-story ferroconcrete building (B building). Each of the buildings is equipped with the facilities outlined in the chart below.

##### (1) 施設/ Facilities

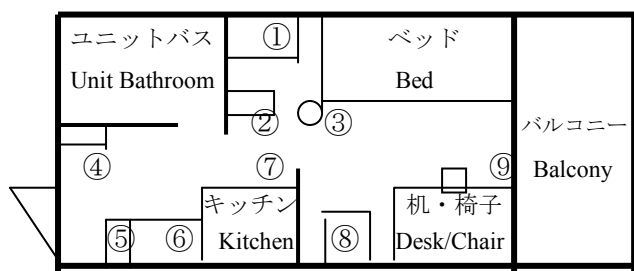
棟名 Bldg.	階 Floor	施設区分 Facility	室区分 Room Classification	室数 Number of Rooms	面積 Room Area
A	1	管理施設 Management facility	事務室 Office	1	45.3 m <sup>2</sup>
	2	共用施設 Common-use facility	娯楽室 Playroom	1	102.5
	3~10	居住施設 Living quarters	単身室 Single rooms	60	13.3
B	1~5		夫婦室 Married couple's apartments	5	44.5
	1~5		家族室 Family apartments	5	57.5

##### (2) 設備/ Furnishings

各室とも冷暖房, 給湯及びユニットバスを設置しています。また、以下の設備があります。  
(布団類、食器類の設置はありません。)

Each room has an air conditioner/heater unit, a water heater, a unit bathroom and other furnishings as below. (There are no installations of bed clothes and the dishes.)

##### 単身室 Single Rooms



①洋服ダンス Wardrobe

②テーブルワゴン Tea Wagon

③折りたたみ椅子 Folding Chair

④下駄箱 Shoe Cabinet

⑤食器戸棚 Cupboard

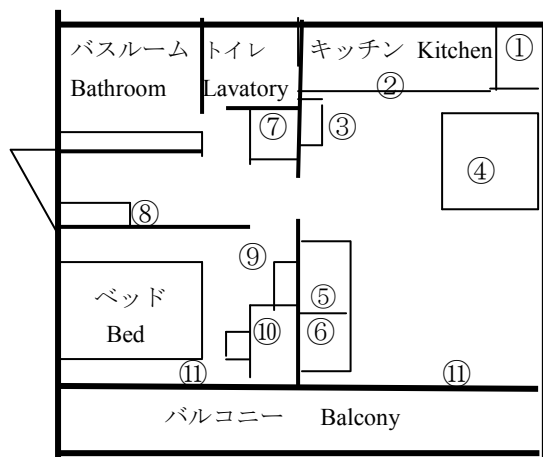
⑥冷蔵庫 Refrigerator

⑦流し台、ガスレンジ Kitchen Sink, Gas Stove

⑧本棚 Bookshelf

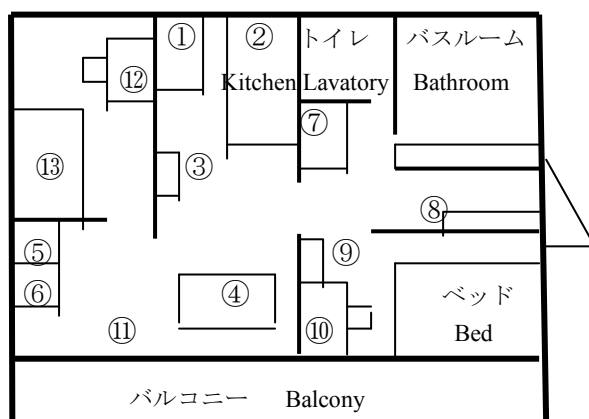
⑨ブラインド Blind

夫婦室 Married Couple's Apartments



- ①冷蔵庫 Refrigerator
- ②流し台、ガスレンジ Kitchen Sink, Gas Stove
- ③食器戸棚 Cupboard
- ④食卓セット Dinette Set
- ⑤整理ダンス Chest of Drawers
- ⑥洋服ダンス Wardrobe
- ⑦洗濯機、乾燥機 Washing Machine, Dryer
- ⑧下駄箱 Shoe Cabinet
- ⑨本棚 Bookshelf
- ⑩机、椅子 Desk, Chair
- ⑪ブラインド Blind

家族室 Family Apartments



- ⑫子供学習机 Children's Study Desk and Chair
- ⑬2段ベッド Bunk Beds

(3) その他/ Others

ランドリー室: A棟の5, 7階に洗濯機, 乾燥機(コインランドリー式)を設置しています。

**Laundry Room:** There are two laundry rooms on the 5th floor and another on the 7th floor of the A building, fitted up with Washing Machine and Dryer operated by a coin-timer system.

**インターネット:** 娯楽室の使用時間内に各自のパソコンを持ち込み無料で無線LANが使用できます。居室内でのインターネット利用を希望する場合はNTTに個別に申し込み有料での使用となります。

**Internet Access:** You can access wireless LAN for free with your own computer in the Common Room. If you need to access the Internet in your room, you can make a contract charged by NTT.

**駐車場:** 単身棟(A棟)入居者は駐車場がありませんので、自動車の所有は認められません。

**Parking Space:** Because there is no car park near A building, residents living there are not permitted to have a car while living there.

## 3. 入居者の必要経費/ Maintenance Charges

居住区分 Room Classification	積立金 Deposit	寄宿料 Rents	共益費 (予定額) Common House Expenses (Expected)
単身室 Single rooms	25,000円/Yen	月額 5,900円/Yen Monthly	月額 2,700円/Yen Monthly
夫婦室 Married couple's apartments	35,000円/Yen	月額 9,500円/Yen Monthly	月額 3,000円/Yen Monthly
家族室 Family apartments	45,000円/Yen	月額 14,200円/Yen Monthly	月額 3,300円/Yen Monthly

積立金・・・退去時における、光熱水料等の精算を円滑に行うための経費。なお、精算による  
余剰金は返還し、不足がでたら追加徴収

Deposit・・・is to pay off the outstanding balance on electric, gas, and water utilities charges. Any  
unused part of the deposit will be returned. Money for any related expenses of the  
above nature exceeding the amount of the deposit will be required.

共益費・・・入居者の共同生活に必要な電気料・清掃費・ごみ処理費等

Common House Expenses・・・is a share of House communal expenses such as electricity for the  
common place, cleaning, and garbage disposal etc.

**電気・ガス・水道料金**

居室内で使用する電気・ガス・水道料金は、各自で使用量に応じて支払います。(各居室に  
専用メーターが設置されています。)水道料金は、大学敷地内のため、市内アパート等の水  
道料金算定方法とは異なります。(単価1立方メートル約580円に使用量を掛けて料金を  
算出します。)

**Electric, Gas, and Water Expenses**

The residents should pay the payments for electricity, gas, and water, depending on the each amount  
of use. (The special meters are installed in each room.)

The computation for water use is different from that of other apartments because the International  
House is on the University campus. ( about 580 yen / 1m<sup>3</sup>×the amount of use= water rate )

List of faculty members capable of guiding JDS fellows (Laos)

**【Development Policy】**

Subject	Position	Name	Research Subject
International Finance	Professor	ISHIDA, Miki	Basic issues on international finance
Environmental and Resource Economics	Professor	KANEKO, Shinji	Environment and Development in Asia: Issues of Global Environment, Urban Environment, Resources and Material Cycle, and Energy and Water Resources
Development Finance	Professor	KOMATSU, Masaaki	Macroeconomic Policies in Economic Development Economic Development and Finance
Economic Development II	—	(Under Consideration)	Study on Development Economics and Policies in Developing World
Economic Statistical Analysis	Associate Professor	ICHIHASHI, Masaru	Quantitative analysis for industrial economy
International Human Resource Development	Associate Professor	TAKAHASHI, Yoshi	Industrialization, economic development, and human resource development in Asia
Development Micro Economics	Associate Professor	GOTO, Daisaku	Institutional Studies for Sustainable Development Economic Analysis of Public Law and Policy
Comparative Study of Economic Development	Visiting Professor	KUNIMUNE, Kouzou	Theoretical and Practical Approaches to Growth Strategies in Asia
International Trade	Visiting Professor	SATO, Hitoshi	International Trade Internationalization of Firms
Economic Development I	Visiting Associate Professor	KUWAMORI, Hiroshi	Compilation and analyses of economic Statistics in developing countries Issues in economic development Issues in international trade